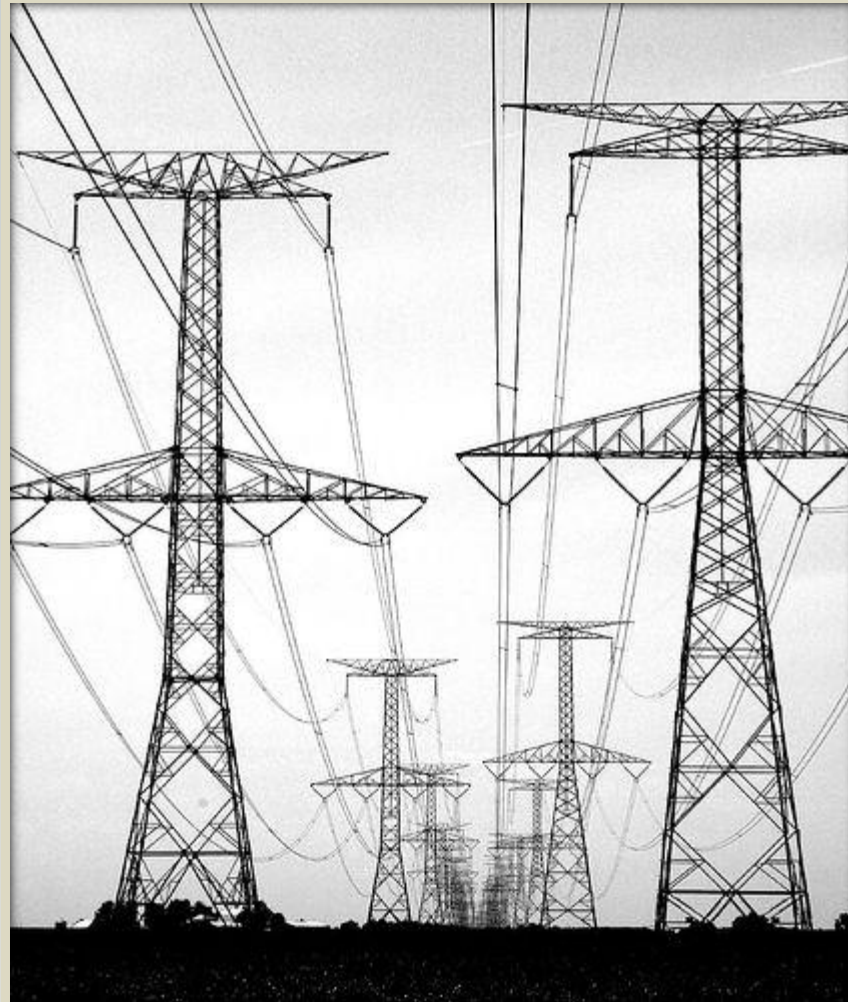


# Resource Typing Energy Sector



January 2014  
Version 1

# Goal

- To Simplify The Request For Mutual Aid/Assistance
  - Know Exactly What The Request Entails
    - Vehicle Name And Description
    - What The Equipment Is Capable Of
      - Reach Of Booms
      - Boom Capacity
    - What Type Of Crew Will Arrive
    - The Tools They Will Arrive With

# Equipment Types

- Bucket Trucks
  - Up to 45'
  - 46' to 60'
  - 61' and Up
- Digger Derricks
  - Up to 45'
  - 46' to 60'
  - 61' and Up
- Assist Truck
- Crew Truck
- Truck-Mounted Reel Lift/Carrier
- Reel Trailer/Puller
- Pole Trailer
- Cargo Trailer
- Snowcat

# Bucket Truck

- A Type Of Aerial Work Platform
- A Hydraulic Lifting Arm (Boom) With A Bucket Attachment
- Mounted To The Chassis Of The Truck
- Has Duplicate Set Of Controls In Bucket
- Boom Capacity And Chassis Capacity Will Determine The Payload
- Height/Distance Is Determined By The Reach Of The Boom



### Vehicle Description

A type of aerial work platform that consist of a bucket at the end of a hydraulic lifting arm, or boom. The boom is mounted to the chassis of a truck and can either be telescopic or articulated. Articulated booms are more appropriate when working in tight places. A duplicate set of controls are available in the bucket to maneuver the worker into position. Most come with compartments for storing tools and parts. Most trucks less than 45' are single axel. Each truck has a certain payload which is determined by the boom capacity and chassis capacity. The truck also has a certain maximum work height/distance which is determined by how long the boom can extend.

## Bucket Truck up to 45'

Designed To/For	Example Equipment
Maneuver Employees	Climbing Gear
Maneuver Materials	Generator
Store Tools	Hydraulic Hoses and Fittings
Store Supplies	Air Compressor
Pull Trailers	Winch
Diagnostics	Inverter
Switching	Hydraulic Tool Circuit
Light Distribution Work	Various Hand Tools
Line Maintenance & Construction	Various Insulated Tools
Emergency Response	Stripping Tools
	Multiple Spot Lights

Company	Name	Working Height/Payload	Type of Crew	Special Operating Needs
Anza Electric	Unit #11	1000 lbs	2 Man Maintenance	
Burbank Water & Power		41'/5300 lbs	2 Man Line Crew	Gasoline, CDL & Training
City of Healdsburg	Altec AT-37_G		1-2 Line Crew Members	Class A License
Hercules Municipal	Altec		Troubleshooter	
Imperial Irrigation	Troubleshooter Truck	Tools & Truck Stock	Linemen Troubleshooter	Class A & Medical Exam
LADWP	Aerial Lift	1 Person Lift Only	2 Person Service Crews	Operator Training
Lodi Electric	#23, #46 & #77		Troubleman	
City of Lompoc	Altec		Line Crew/Service Crew	Bucket Trained
Pacific Power	Service Bucket	1200 lbs	Single Troubleman	Class A CDL & Training
PG&E	Trouble Truck (w/Reel Carrier)	35'-38'/3k-5k lbs.	2 Man Crew	Class A if over 26k GVWR
City of Riverside	Trouble Trucks F550	Single Bucket	Service Crew	
City of Roseville	Altec	37.5'/300-400 lbs		
SCE	Trouble Man Truck	36'/350 lbs	1-2 Trouble Men	Class A CDL & Medical Exam
City of Shasta Lake	Trouble Truck 4x4	Boom Reach 38-43'	1 Troubleman	
SMUD	Aerial Lift (w/reel carrier)	37'-45'/ Approx 2.5K lbs	Line Crew/Electricians/Maint.	Class A if over 26K GVWR



### Vehicle Description

A type of aerial work platform that consist of a bucket at the end of a hydraulic lifting arm, or boom. The boom is mounted to the chassis of a truck and can either be telescopic or articulated. Articulated booms are more appropriate when working in tight places. A duplicate set of controls are available in the bucket to maneuver the worker into position. Most come with compartments for storing tools and parts. Bucket trucks 46' to 60' can have either a single or tandem axel. Each truck has a certain payload which is determined by the boom capacity and chassis capacity. The truck also has a certain maximum work height/distance which is determined by how long the boom can extend.

## Bucket Truck 46' to 60'

Designed To/For	Example Equipment
Maneuver Employees	Climbing Gear
Maneuver Materials	Generator
Store Tools	Hydraulic Hoses and Fittings
Store Supplies	Air Compressor
Pull Trailers	Winch
Distribution Work	Inverter
Light Transmission Work	Hydraulic Tool Circuit
Streetlight Maintenance	Various Hand Tools
Line Maintenance & Construction	Various Insulated Tools
	Stripping Tools
	Multiple Spot Lights
	Traffic Control Lights

Company	Name	Working Height/Payload	Type of Crew	Special Operating Needs
Anza Electric	N/A			
Burbank Water & Power		55'/9900 lbs	3 Man Line Crew	Diesel, CDL & Training
City of Healdsburg	Altec AM-55		3 Line Crew Members	Class A CDL
Hercules Municipal	N/A			
Imperial Irrigation	Aerial Bucket Truck	Tools & Truck Stock	2 Lineman Journeyman	Class A CDL & Medical Exam
LADWP	Aerial Lift	2 Person Bucket w/ 1500 lbs	Distribution Line Crews	Operator Training & Commercial License
Lodi Electric	#2		Line Crew	Class A CDL
City of Lompoc	N/A			
Pacific Power	Crew Bucket	2500 lbs	3-4 Man Crew	Class A CDL & Training
PG&E	Material Handler/Bucket Truck	37'-59'/2k-5k lbs	2-3 Man Crew	Class A CDL & Machine Training
City of Riverside	N/A			
City of Roseville	N/A			
SCE	Apparatus Tub/Double-Bucket	55'-57'/ 700 lbs	3-5 Man Crew	Class A CDL, Medical Exam & Training
City of Shasta Lake	2 Man Bucket 4x4	Boom Reach 56'-61'	3 Man Crew	Class A CDL
SMUD	Aerial Lift	50'-60'/ Approx. 2.5K lbs	Line Crew/Electricians	Class A CDL if over 26K GVWR



### Vehicle Description

A type of aerial work platform that consist of a bucket at the end of a hydraulic lifting arm, or boom. The boom is mounted to the chassis of a truck and can either be telescopic or articulated. Articulated booms are more appropriate when working in tight places. A duplicate set of controls are available in the bucket to maneuver the worker into position. Most come with compartments for storing tools and parts. Most truck 61' and up are tandem axel. Each truck has a certain payload which is determined by the boom capacity and chassis capacity. The truck also has a certain maximum work height/distance which is determined by how long the boom can extend.

## Bucket Truck 61' and up

Designed To/For	Example Equipment
Maneuver Employees	Climbing Gear
Maneuver Materials	Generator
Store Tools	Hydraulic Hoses and Fittings
Store Supplies	Air Compressor
Pull Trailers	Winch
Transmission Work	Inverter
Line Maintenance & Construction	Hydraulic Tool Circuit
	Various Hand Tools
	Various Insulated Tools
	Stripping Tools
	Multiple Spot Lights
	Traffic Control Lights

Company	Name	Working Height/Payload	Type of Crew	Special Operating Needs
Anza Electric	N/A			
Burbank Water & Power		65' & 75'/15,000 lbs	3 Man Line Crew	Diesel, CDL & Training
City of Healdsburg	N/A			
Hercules Municipal	N/A			
Imperial Irrigation	Aerial Bucket Truck	Tools & Truck Stock	2 Lineman Journeyman	Class A CDL & Medical Exam
LADWP	Aerial Lift	Multi Person with 2000 lbs. Material Handling Jib up to 197' Working Height	Transmission & Distribution Crews	Operator Training & Commercial License
Lodi Electric	#12		Line Crew	Class A CDL
City of Lompoc	N/A			
Pacific Power	Transmission Bucket	3000 lbs	3-4 Man Crew	Class A CDL & Training
PG&E	Material Handler/Bucket Truck	150'/Varies due to Chassis Configuration	5-6 Person GC Crew	Class A CDL & Machine Training
City of Riverside	E316	Double Bucket w/Material Handling Jib	Line Crew	
City of Roseville	Altec	86.8'/700 lbs		
SCE	80' Bucket/90' Bucket		2 Man Crew	Class A CDL, Medical Exam & Training
City of Shasta Lake	2 Man Bucket	Boom Reach 60'-65'	3 Man Crew	Class A CDL
SMUD	Aerial Lift	65'-167'/Approx. 5K lbs.	Line Crew/Electricians	Class A CDL if over 26K GVWR

# Digger Derrick

- Has A Boom Mounted To The Chassis Of The Truck
- The Boom Has An Auger Attachment
- Some Have Bucket Attachments
- Used For Digging Hole, Setting Poles, And Maneuvering Equipment
- Boom Capacity And Chassis Capacity Will Determine The Payload
- Height/Distance Is Determined By The Reach Of The Boom



# Digger Derrick up to 45'



## Vehicle Description

A type of truck mounted lifting arm, or boom, with an auger attachment. It is designed to accommodate such tasks as digging holes, setting poles, and maneuvering material. An auger can come in various diameters and lengths, and attaches to the side of the boom.

Some trucks also come with a bucket attachment. Most come with compartments for storing tools and parts. Each truck has a certain payload which is determined by the boom capacity and the chassis capacity. The truck also has a certain maximum work height/distance which is determined by how long the boom can extend.

Designed To/For	Example Equipment
Dig Holes	Replacement Auger
Set Poles	Pole Guide
Maneuver Materials	Pole Puller
Store Supplies	Transferable Pole Buddy
Pull Trailers	Boom Tip Winch
Light Distribution Work	Generator
Pull Short Runs of Underground	Replacement Hydraulic Parts
Set Switches	Hydraulic Tool Circuit
Line Maintenance & Construction	Capstan Winch
	Cat Heads
	Electric Cord Reel
	Hydraulic Hose Reel

Company	Name	Working Height/Payload	Type of Crew	Special Operating Needs
Anza Electric	Units 10 & 12	1000 lbs	Construction Crew	
Burbank Water & Power		42'/20,000 lbs	2 Man Line Crew	Diesel, CDL & Training
City of Healdsburg	N/A			
Hercules Municipal	N/A			
Imperial Irrigation	Digger Derrick	Tools & Truck Stock	1 Operator	Class A CDL & Medical Exam
LADWP	N/A			
Lodi Electric	N/A			
City of Lompoc	Altec/Line Truck		Line Crew	Digger Derrick Trained
Pacific Power	N/A			
PG&E	Medium Line Truck	45'/3 K lbs.	3 Man Crew	Class A CDL & Machine Training
City of Riverside	E317	No Auger	Line Crew	
City of Roseville	Altec	45'/7440 lbs		
City of Shasta Lake	N/A			
SMUD	Digger Derrick	45'/Approx. 5K lbs	Line Construction Personnel	Class A CDL if over 26K GVWR



### Vehicle Description

A type of truck mounted lifting arm, or boom, with an auger attachment. It is designed to accommodate such tasks as digging holes, setting poles, and maneuvering material. An auger can come in various diameters and lengths, and attaches to the side of the boom.

Some trucks also come with a bucket attachment. Most come with compartments for storing tools and parts. Each truck has a certain payload which is determined by the boom capacity and the chassis capacity. The truck also has a certain maximum work height/distance which is determined by how long the boom can extend.

## Digger Derrick 46' to 60'

Designed To/For	Example Equipment
Dig Holes	Replacement Auger
Set Poles	Pole Guide
Maneuver Materials	Pole Puller
Store Supplies	Transferable Pole Buddy
Pull Trailers	Boom Tip Winch
Distribution Work	Generator
	Replacement Hydraulic Parts
Pull Short Runs of Underground	Hydraulic Tool Circuit
Set Switches	Capstan Winch
Line Maintenance & Construction	Cat Heads
Set Transformers	Electric Cord Reel
	Hydraulic Hose Reel

Company	Name	Working Height/Payload	Type of Crew	Special Operating Needs
Anza Electric	N/A			
Burbank Water & Power	N/A			
City of Healdsburg	Altec D947		3 Man Crew	Class A CDL
Hercules Municipal	N/A			
Imperial Irrigation	Digger Derrick	Tools & Truck Stock	1 Operator	Class A CDL & Medical Exam
LADWP	Digger Derrick	Up to 15,000 lbs Lifting Capacity	Distribution Line Crews	Operator Training & Class A CDL
Lodi Electric	#01, #10 & #11		Line Crew	Class A CDL
City of Lompoc	Altec/Line Truck		Line Crew	Digger Derrick Trained
Pacific Power	Digger Derrick	3000 lbs	3-4 Man Crew	Class A CDL & Training
PG&E	Medium or Heavy Line Truck	60'/3K lbs. min	5-6 Person GC Crew	Class A CDL & Machine Training
City of Riverside	N/A			
City of Roseville	Altec	58'/11,400 lbs		
SCE	Prefab Auger Truck	47'/7 Tons	3-5 Man Crew	Class A CDL, Medical Exam & Training
City of Shasta Lake	Digger Derrick	49'/33,000 lbs, 60'/54,000 lbs		Class A CDL
SMUD	Digger Derrick	50' & 60'/Approx. 8K lbs.	Line Construction Personnel	Class A CDL if over 26K GVWR



### Vehicle Description

A type of truck mounted lifting arm, or boom, with an auger attachment. It is designed to accommodate such tasks as digging holes, setting poles, and maneuvering material. An auger can come in various diameters and lengths, and attaches to the side of the boom.

Some trucks also come with a bucket attachment. Most come with compartments for storing tools and parts. Each truck has a certain payload which is determined by the boom capacity and the chassis capacity. The truck also has a certain maximum work height/distance which is determined by how long the boom can extend.

## Digger Derrick 61' and up

Designed To/For	Example Equipment
Dig Holes	Replacement Auger
Set Poles	Pole Guide
Maneuver Materials	Pole Puller
Store Supplies	Transferable Pole Buddy
Pull Trailers	Boom Tip Winch
Distribution Work	Generator
Store Tools	Replacement Hydraulic Parts
Line Maintenance & Construction	Hydraulic Tool Circuit
	Capstan Winch
	Cat Heads
	Electric Cord Reel
	Hydraulic Hose Reel

Company	Name	Working Height/Payload	Type of Crew	Special Operating Needs
Anza Electric	N/A			
Burbank Water & Power		65'/30,000 lbs.	3 Man Crew Line	Diesel, Class A CDL & Training
City of Healdsburg	N/A			
Hercules Municipal	N/A			
Imperial Irrigation	N/A			
LADWP	N/A			
Lodi Electric	N/A			
City of Lompoc	N/A			
Pacific Power	N/A			
City of Riverside	N/A			
City of Roseville	N/A			
SCE	Heavy, Boom or Line Truck Hiliners	65'/7 Tons	2 Man Crew	Class A CDL, Medical Exam & Training
City of Shasta Lake	N/A			

# Assist Truck

- Assist Crew By Carrying Extra Tools And Supplies
- Has Compartments For Carrying Everything Necessary
- Example Tools
  - Air Compressors
  - Generators
  - Ladders
  - Extension Cords
  - Portable Lights

# Assist Truck



## Vehicle Description

A truck which assist the crew by carrying most of the tools and supplies. It has multiple compartments to carry everything necessary to complete a job. Some tools and supplies this vehicle may carry are compressors, generators, ladders, and many other important tools and parts.

Designed To/For	Example Equipment
Transport Crew	Air Compressor
Store and Haul Tools	Generator
Store and Haul Supplies	Ladder
Transport Materials	Extension Cords
Pull Trailers	Portable Lights
Support	Inverter
Line Maintenance & Construction	Various Hand & Power Tools
	Various Insulated Tools

Company	Name	Working Height/Payload	Type of Crew	Special Operating Needs
Anza Electric	Unit #2, #6 & #7	1000 lbs	Construction Crew	(1) Pickup (2) Service Bodies
Burbank Water & Power		10,000 lbs	3 Man Line Crew	Diesel
City of Healdsburg	Ford F-350 4x4		1-2 Foreman/Supervisor	
Hercules Municipal	Altec		Troubleshooter	
Imperial Irrigation	1 Ton Flat Bed	For Heavy Loads	1 Operator	Class C CDL
Island Energy	Ford F-150, F-250 & F-350		Regular Field Personnel	
LADWP	N/A			
Lodi Electric	#27 & #42			
City of Lompoc	N/A			
Pacific Power	Line Crew Flatbed	1500 lbs	3-4 Man Crew	Medical Card
PG&E	Assist Truck (Ford F550)	½ Ton/ ¾ Ton/ 1 Ton	Foreman/Supervisor	
City of Riverside	Ford F-350			
City of Roseville	Ford F-Series	5000-6100 lbs		
City of Shasta Lake	Chevy 3500 HD 4x4	GVWR 12,000 lbs		
SMUD	Varies Depending on Truck Function	Approx. 9K lbs.	All Field Personnel	Class A CDL if over 26 GVWR

# Crew Truck

- A Truck Able To Transport Extra Crew To The Jobsite
- Has Seats In The Cab And The Modified Bed
- Has Compartments For Carrying The Crew Tools
- Carries Many Of The Same Tools As The Assist Truck



### Vehicle Description

A truck which is able to transport a crew to the jobsite. This truck has multiple seats in the cab and has multiple seats in the modified bed. The truck carries compartments for the crew's tools and supplies. Some tools this vehicle may carry are compressors, generators, ladders, and many other important tools and supplies.

## Crew Truck

Designed To/For	Example Equipment
Transport Crew	Air Compressor
Store and Haul Tools	Generator
Store and Haul Supplies	Ladder
Transport Materials	Hydraulic Hoses & Fittings
Pull Trailers	Capstan Winch
	900 MHz Radio
	Various Hand & Power Tools
	Various Insulated Tools

Company	Name	Working Height/Payload	Type of Crew	Special Operating Needs
Anza Electric	N/A			
Burbank Water & Power		¾ Ton	5-6 People	Gasoline
City of Healdsburg	N/A			
Hercules Municipal	Altec		Troubleshooter	
Imperial Irrigation	Foreman Truck	Tools/AED/Generator	1 Operator	Class A CDL & Medical Exam
Island Energy	N/A			
LADWP	Crew Support	2 Employees & Material	Transmission & Distribution Crews	Operator Training & Commercial License
Lodi Electric	#50, #21 & #93		Foreman/ Line Crew	
City of Lompoc	Ford Crew Cabs		Line Crew	
Pacific Power	N/A			
PG&E	Crummy/Power Wagon	Approx. 5K lbs	5-6 Person GC Crew	
City of Riverside	N/A			
City of Roseville	N/A			
SCE	Carry All		Foreman/1-5 Man Crew	Class C CDL
City of Shasta Lake	Chevy 3500 HD 4x4 Flatbed	GVWR 12,000 lbs	Seats 5-6	
SMUD	Line Crew Service Truck (Ford F350)	5 Crew/Approx. 3.15 K lbs	All Field Personnel	Class A CDL if over 26K GVWR

# Truck-Mounted Reel Lift/Carrier

- One/Multiple Revolving Reel Turrets For Carrying Wire/Cable
- Hydraulically Moved To Compensate For Different Dimensions Of Wire/Cable
- Each Reel Carries A Certain Payload
- Some Bucket Trucks Have This Attachment
- Some Assist Trucks Have This Attachment





### Vehicle Description

A truck with one or multiple revolving turret reels for hauling spools of wire/cable. Each reel lift/carrier carries a different payload. The reel lift/carrier is able to move hydraulically to compensate for different dimensions of spools. Some trucks are specifically designed for the transportation of wire reels, but not every company owns one. Many bucket trucks, digger derricks trucks, assist trucks, and crew trucks do not have reel lift/carrier attachments, so if one is needed, make sure it is requested.

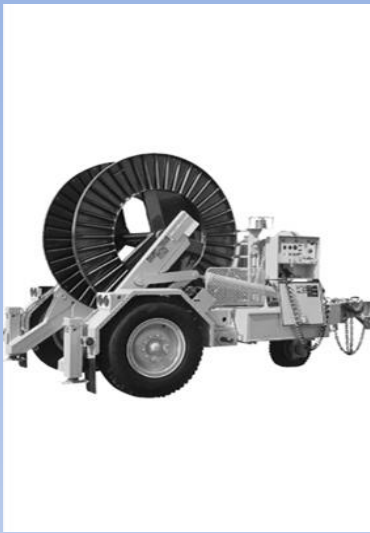
## Truck Mounted Reel Lift/Carrier

Designed To/For	Equipment
Transport Reels of Wire/Cable Hydraulically Lift and Lower Attach to a Bucket Truck Attach to a Digger Derrick Attach to a Assist Truck Attach to a Crew Truck	The equipment can vary depending on the vehicle that has this attachment. This can be at the rear of a bucket truck, digger derrick, assist truck, or crew truck. All carry different equipment depending on the crew and work needed to be done.

Company	Name	Working Height/Payload	Type of Crew	Special Operating Needs
Anza Electric	N/A			
Burbank Water & Power	N/A			
City of Healdsburg	N/A			
Hercules Municipal	N/A			
Imperial Irrigation	N/A			
LADWP	Reel Carriers Underground Reel Carriers Overhead	Capable of carrying all Transmission and Distribution cable and conductor sizes	Transmission & Distribution Line Crews	Operator Training & Commercial License
Lodi Electric	N/A			
City of Lompoc	N/A			
Pacific Power	N/A			
PG&E	Trouble Trucks	12K lbs.		
City of Riverside	N/A			
City of Roseville	N/A			
SCE	Double-Reeler Truck			Varies depending on the vehicle that has the attachment.
City of Shasta Lake	N/A			
SMUD	Reel Truck	42' Aerial Lift/12K lbs.		Varies depending on the vehicle that has the attachment.

# Reel Trailer/Puller

- A Trailer With One/Multiple Revolving Reels For Carrying Wire/Cable
- Some Are Pullers/Tensioners
  - Capable Of Installing Cable
  - Capable Of Removing Cable
- Some Reels Are Turned By Hand And Some Use A Motor
- Single Axel Or Tandem Axel Depending On The Payload
- Most Attach To A Standard Tow Hitch Ball



### Vehicle Description

A trailer with one or multiple revolving turret reels for hauling spools of wire/cable. Each type of trailer is capable of carrying a certain payload. Some are single axel and some are tandem. Some turrets can be turned by hand and some use motors. Many are also cable pullers or tensioners, which means that they are capable of assisting with installing and removing of cable. Most of these trailers are able to connect to a standard hitch ball mounted at the rear of a tow vehicle.

## Reel Trailer/Puller

Designed To/For	Example Equipment
Transport Reels of Wire/Cable	Pulling System
Assist with Installing Cable	Tensioning System
Assist with Removing Cable	Diesel Engine
Attach to Standard Tow Hitch Ball	Free Wheeling Disconnect Adjustable Reel Mount

Company	Name	Working Height/Payload	Type of Crew	Special Operating Needs
Anza Electric	Reel Dollie # T-3	4000 lbs		Pintle Hitch
Burbank Water & Power	N/A			
City of Healdsburg	Single Reel Trailer & 3 Reel	10k/30k		
Hercules Municipal	3-Reel Dolly, Gooseneck 40		Cable Pulling Crew	
Imperial Irrigation	Wire Trailer	Copper & Aluminum	Operator	Class A or C CDL
LADWP	Underground Cable Pulling Trucks & Overhead Conductor Pullers	Capable of carrying all Transmission and Distribution cable and conductor sizes	Transmission & Distribution Line Crews	Operator Training & Commercial License
Lodi Electric	#100		Line Crew	
City of Lompoc	Sherman & Rielly		Line Crew	Operator Training
Pacific Power	Reel Trailer/Puller		3-4 Man Crew	Operator Training
PG&E	Three Reel/Underdawg/Puller	19.5K lbs.	Varies depending on the vehicle pulling the trailer	Varies depending on vehicle
City of Riverside	Sherman & Reilly Q263 & Q300		Single Reel Take Up, Rope, Wire	
City of Roseville	Hogg Davis	24k lbs of line pull		
SCE	OH Wire-Stringer Equipment Truck	Varies (look up GVWR)	Varies depending on the vehicle pulling the trailer	Varies depending on vehicle
City of Shasta Lake	Pengo Puller	GVWR 11,400 lbs		
SMUD	Reel Trailer/Cable Puller Trailer	Varies	Varies depending on the vehicle pulling the trailer	Varies depending on vehicle

# Cargo Trailer

- A Trailer Designed For Transporting Extra Tools And Supplies
- Tools Depend On The Crew Inside The Tow Vehicle
- Example Tools
  - Hand Tools
  - Power Tools
  - Generator
  - Air Compressor
- Most Attach To A Standard Tow Hitch Ball



**Vehicle Description**

A flat bed trailer which carries extra tools and supplies for the crew. Some tools and supplies this vehicle may carry are compressors, generators, and many other important tools and parts.

The tools and supplies it carries depends on the crew inside of the tow vehicle. Most of these trailers are able to connect to a standard tow hitch ball mounted to the rear of the tow vehicle.

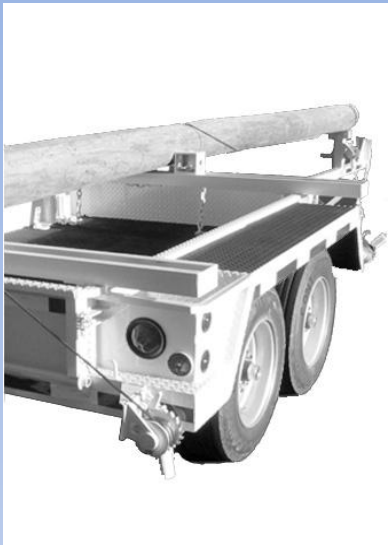
**Cargo Trailer**

Designed To/For	Example Equipment
Carry Tools	Air Compressor
Carry Supplies	Generator
Transport Materials	Inverter
Carry Line Building Materials	Extension Cords
Attach to Standard Tow Hitch Ball	Various Hand Tools
	Various Power Tools
	Various Insulated Tools

Company	Name	Working Height/Payload	Type of Crew	Special Operating Needs
Anza Electric	Flatbed Trailer # T-4	2500 lbs		Pintle Hitch
Burbank Water & Power		7000 lbs		Training
City of Healdsburg	Altec 1 Axle Cargo Trailer	10k		
Hercules Municipal	N/A			
Imperial Irrigation	Material Trailer	Materials/Roadbase	Operator	Class A or C CDL
LADWP	Equipment & Material Trailers	Up to 30,000 lbs	Transmission & Distribution Crews	Operator Training & Commercial License
Lodi Electric	#108		Line Crew	
City of Lompoc	Dump Trailer		Line Crew	Operator Training
Pacific Power	N/A			
PG&E	Cargo Trailer	8.5K lbs	Varies depending on the vehicle pulling the trailer	Varies depending on vehicle
City of Riverside	Q236	20k		
City of Roseville	Crew Utility Trailer	3500 lbs		
City of Shasta Lake	N/A	N/A		
SMUD	Equipment Trailer Fiber Optic Splice Trailer	Varies 2K lbs.	Varies depending on the vehicle pulling the trailer	Varies depending on vehicle

# Pole Trailer

- A Trailer Which Transports Poles
- Transports Multiple Poles
  - Different Lengths
  - Different Widths
- Most Attach To A Standard Tow Hitch Ball



### Vehicle Description

A trailer which is able to carry one or multiple poles at different lengths. The pole carrying assembly includes rail bolsters (supports) with adjustable pole cradles. The trailer also comes with a center pole saddle on the extendable trailer tongue. All pole trailers also come with multiple load tie downs. Most of these trailers are able to connect to a standard tow hitch ball mounted at the rear of a tow vehicle.

## Pole Trailer

Designed To/For	Example Equipment
Transport Multiple Poles	Tie Downs
Transport Multiple Lengths of Poles	Straps with Ratchets
Transport Multiple Widths of Poles	Bed Bolsters
Attach to Standard Tow Hitch Ball	Tongue Bolsters

Company	Name	Working Height/Payload	Type of Crew	Special Operating Needs
Anza Electric	Pole Dollie #T-1, #T-2	4000 lbs		Pintle Hitch
Burbank Water & Power		7000 lbs & 13,500 lbs		Training
City of Healdsburg	Altec 2 Axle Cargo Trailer	10k		
Hercules Municipal	N/A			
Imperial Irrigation	Pole Trailer	Poles	Operator	Class A & Medical Exam
LADWP	Pole Delivery Trucks & Trailers	40' to 120' poles	Transmission & Distribution Crews	Operator Training & Commercial License
Lodi Electric	#109		Line Crew	
City of Lompoc	Pole Trailer		Line Crew	
Pacific Power	Pole Trailer	1-6 Poles		Operator Training
PG&E	Pole Trailer	Depends (diameter,Weight)/depends (vehicle code)/ 8.5K	Varies depending on the vehicle pulling the trailer	Varies depending on vehicle
City of Riverside	Q2026, Q033, Q034, Q236			
City of Roseville	Pole Dolly	GVWR 14,000 lbs		
SCE	Pole Dolly	12'-14'	Varies depending on the vehicle pulling the trailer	Varies depending on vehicle
City of Shasta Lake	Standard Pole Dolly	GVWR 8,800 lbs		
SMUD	Pole Dolly	4/Up to 65'/13.5K lbs	Varies depending on the vehicle pulling the trailer	Varies depending on vehicle

# Snowcat

- A Tracked Vehicle Able To Travel On Snow
- Designed For Use In Extremely Cold Conditions
- Designed To
  - Transport People
  - Clear Roads
  - Construct Ice Roads
  - Access Remote Areas
  - Search and Rescue





Vehicle Description
<p>A fully tracked vehicle which is designed to move on snow. Each snowcat has an enclosed cab able to accommodate a various number of people. This cab is designed for use in extremely cold conditions. The windshield can be kept clear of ice and snow by a variety of ways, such as modified wipers, advanced coatings and more. Most Snowcats have two sets of tracks but some have a more complex four track system and are known as Sno-cats. Many come with an area for a plow attachment used for moving snow and grooming ski trails.</p>

# Snowcat

Designed To/For
Move on Snow
Transport People
Clear Trails
Ice Road Construction
Road Maintenance
Access Remote Areas
First Aid Transportation
Search and Rescue

Company	Name	Working Height/Payload	Type of Crew	Special Operating Needs
LADWP	Snowcat	4 to 6 Employees & Personal Tools	Transmission and Communication Crews	Operator Training
Pacific Power	Snowcat	4 Passengers, 800 lbs		Operator Training

Company Identification		
Company / Name	Location	Phone Number
Pacific Crest Snowcat	Lake Tahoe, CA	(530) 581 - 1767 (888) 792 - 9222
Pan Abode Cedar Homes	Tahoe City, CA	(530) 583 - 5370
Remote Access Service	Elk Grove, CA	(916) 764 - 4619
Snowcat Transportation	Reno, NV	(775) 972 - 7500
Summit Communications Inc. - Bill Blas	Truckee, CA	(530) 587 - 4367 (530) 412 - 0713
Caltrans Headquarters	Sacramento, CA	(916) 654 - 5266
Tucker Sno-cat Corp.	Medford, OR	(541) 779 - 3731
T L Forest Products Inc.	Ashland, OR	(541) 488 - 2880
Bratton Reforestation - Bill Meilicke	Medford, OR	(541) 779 - 8829 (541) 821 - 4040
Colorado Snowcat - David	Denver, CO	(303) 232 - 5252 (303) 349 - 8002